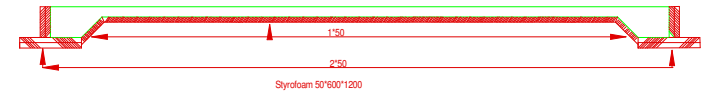
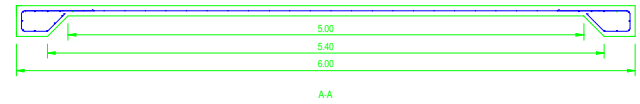
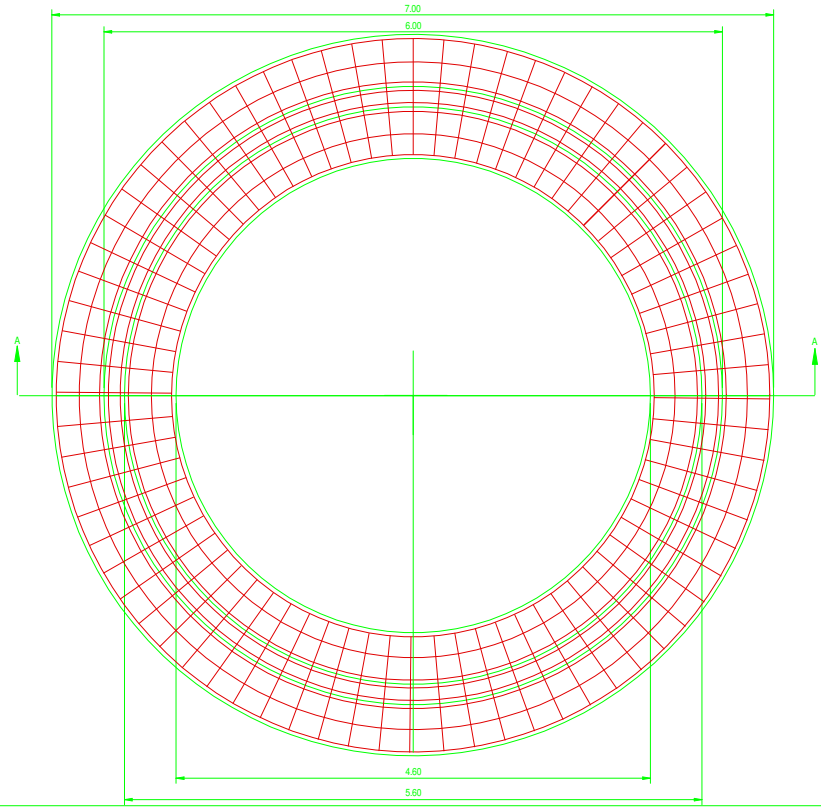


Betong ca. 4,5 m<sup>3</sup> c 25/30  
d-max 16

Armering  
63 st. bygjar dia: 10 mm c-300  
220 meter dia: 8 mm lagerlängd  
3 st. armeringsrät 2500\*5000\*4

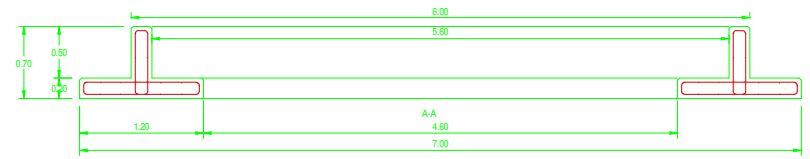


Styroloam 50'600'1200



Betong ca. 6,5 m<sup>3</sup>  
Armering lagerlängd dia: 8 mm 330 meter

63 st bygjar  
c-c 300 mm



Packad grusbäddi 0-16

